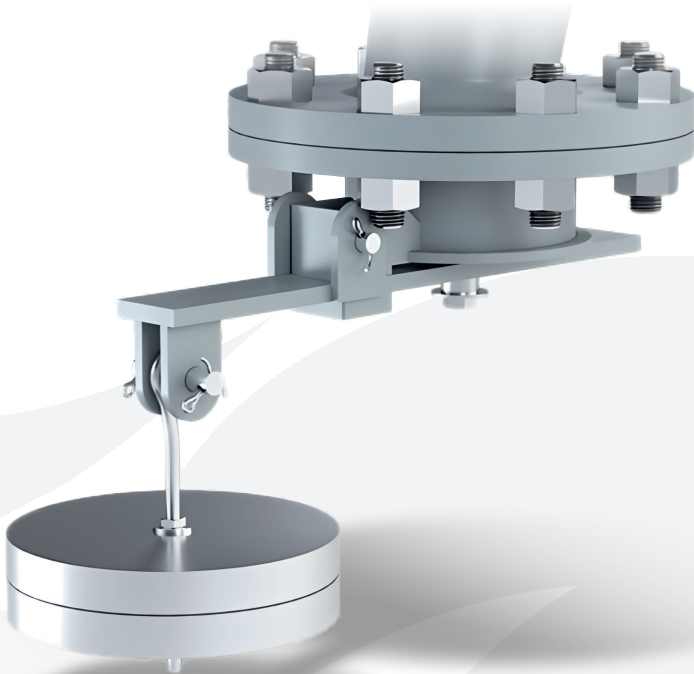




IN BUSINESS



Series 7300D

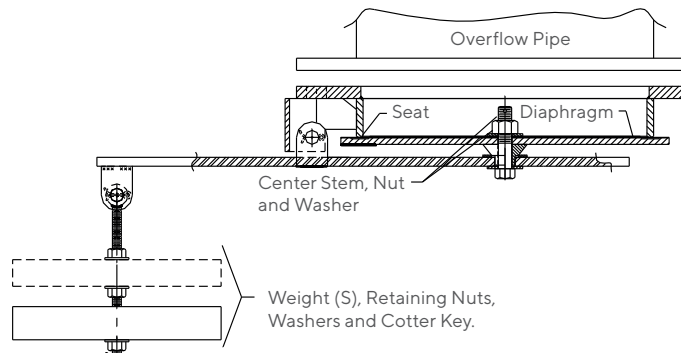
Installation, Operation, and Maintenance Instructions

Installation Procedure

1. Remove the valve and weight(s) from their shipping cartons. Inspect all components carefully to ensure that all packing materials are removed. Protective cardboard inserts attached to the sealing disk should be removed.
2. Mount the valve to the appropriate tank flange on the tank overflow pipe using gaskets compatible with service conditions. For best performance, the valve should be mounted level so that the seating surface is no more than 1° off horizontal. Make sure that the sealing disk is free to move about the hinge and that nothing obstructs the sealing disk of the valve from making contact with the seat.
3. Assemble the weight(s) supplied with the valve to the threaded rod that hangs from the end of the valve lever arm. The weight(s) should be secured with the supplied washers and hex nuts. A cotter key should be used to secure the bottom nut/washer in position to eliminate the possibility of loosening of the nuts when in service.
4. The weight(s) act to maintain the valve disk in the closed position against the seat, in opposition to any pressure or liquid head in the overflow pipe. As the set point of the overflow valve is approached, the valve will open to relieve the pressure. It will reseat automatically when the pressure has been reduced below the set point. Make sure that nothing obstructs the free movement of the weight(s) or sealing disk as the valve is cycled between the open and closed positions.

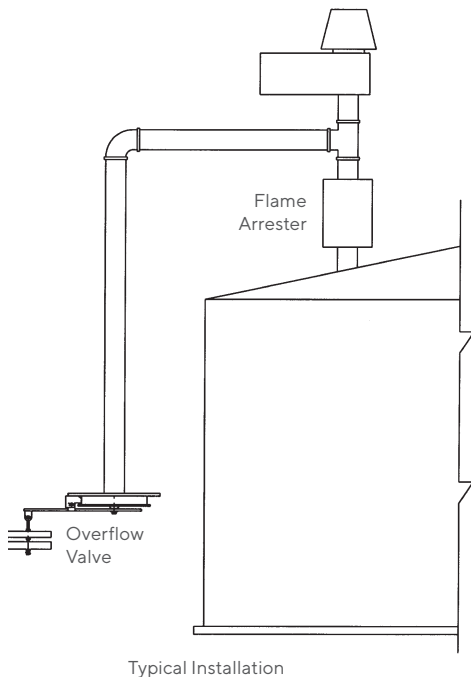
NOTE 1:

When weights (packed separately if heavy) are included with a unit, the weights should be inspected, properly identified and set aside for later installation.



Caution!

If any questions arise concerning the proper installation or maintenance of our products, please contact Protectoseal or one of our Authorized Representatives. When installing any Protectoseal device, the legal, corporate and advisory safety regulations and procedures appropriate for the specific installation site must be fully understood and followed.



Maintenance

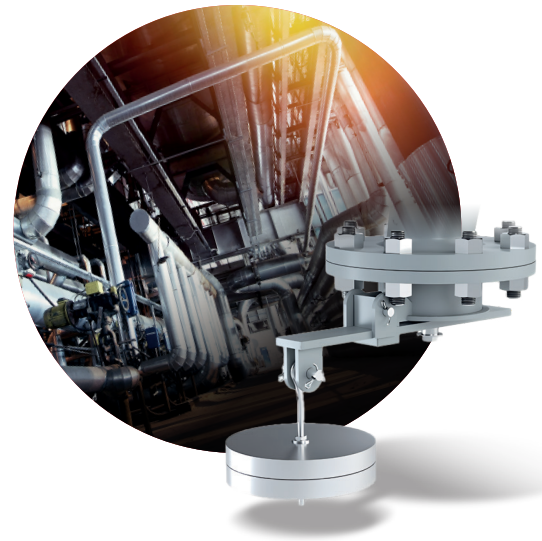
Protectoseal recommends that our products be inspected and maintained according to the normal maintenance schedule of the facility. At a minimum, maintenance should be conducted annually. More frequent maintenance may be required, and should be scheduled, for unusual service conditions.

Caution!

CAUTION: Do not use a file or other sharp tool to clean the seating surface.

Maintenance Procedure:

1. Inspect the machined seating surface of the valve. Seat should be free of nicks, marks or accumulations of foreign material. If necessary, clean the seat surface with a safe and suitable cleaning fluid.
2. Inspect the diaphragm material. The diaphragm should be clean, flat and smooth. If the diaphragm material is damaged it should be replaced by loosening the center stem washer and nut, replacing the diaphragm and reassembling the nut and washer to hold the diaphragm in position.
3. Make sure that the sealing disk is free to move about the hinge and that nothing obstructs the sealing disk of the valve from making contact with the seat. The weight(s) act to maintain the valve disk in the closed position against the seat, in opposition to any pressure or liquid head in the overflow pipe. As the set point of the overflow valve is approached, the valve will open to relieve the pressure. It will reseal automatically when the pressure has been reduced below the set point. Make sure that nothing obstructs the free movement of the weight(s) or sealing disk as the valve is cycled between the open and closed positions.



For Safety, Efficiency and Environmental Protection

■ Pressure/Vacuum Relief Vents

Pallets open and close to permit only the intake or outlet relief necessary to stay within permissible working pressures and avoid damage to tank.

■ Pipe-Away Relief Vents

Pressure/Vacuum relief for applications that require hazardous vapors to be processed into manifolded piping and not released into the atmosphere.

■ Emergency Vents

Protect tanks against rupture or explosion resulting from excessive internal pressure caused by exposure to fires. PIN-TECH® units featuring <500 ppm leakage available.

■ Flame Arresters

Prevent external flame entry into storage or processing tanks via vent opening.

■ Detonation Arresters

Withstand and arrest high velocity and pressure flame fronts approaching from either direction in closed or manifolded piping systems.

■ Tank Blanketing Valves

Control the flow of an inert gas into the vapor space of a storage tank so that the tank pressure can be maintained within an acceptable range.

Contact Protectoseal today to learn more about our safety solutions and how our maintenance services can keep your operations secure and compliant.



The Protectoseal Company
(Headquarters)

✉ info@protectoseal.com

☎ 1.630.595.0800

🌐 www.protectoseal.com



Elmac Technologies Ltd.
T/A Protectoseal

✉ enquiries@protectoseal.uk

☎ +44 1352 717 560

🌐 www.protectoseal.com



Elmac Envisafe Technologies
Pvt. Ltd. T/A Protectoseal

✉ sales.eet@protectoseal.in

☎ +91 22 4100 6998

🌐 www.protectoseal.com